

JNMP144-335~355(L)

"L" after the module type indicates that the type is suitable for 1000V DC.

High efficiency poly solar module

JNMP144

Optimized BOM management and utilization, reliable and stable performance.

Half-cell design to reduce shadow effects and reduce loss.

Passed third-party tests of salt spray, ammonia, sand and dust, applicable to various scenarios.

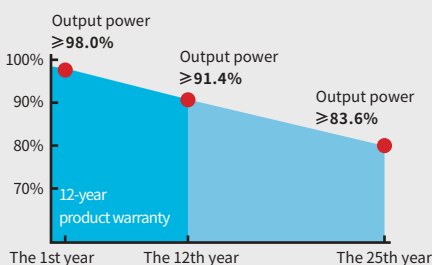
Demonstrated extremely low degradation guarantees long-term benefits of the power station.

CERTIFICATION



TUV: IEC/EN 61215, IEC/EN 61730
BIS: IS 14286/IEC 61215, IS/IEC 61730
GB/T 19001-2016/ISO 9001:2015
GB/T 24001-2016/ISO 14001:2015
OHSAS 18001:2007
CNAS-CL01: ISO/IEC 17025:2017

QUALITY ASSURANCE



Advanced production process

Optimized 5BB design
Multi-layer anti-reflection film



Superior quality control

Full automatic production line
MES and ERP digitizing logistics management
100% three times EL and appearance inspection



Excellent power generation performance

0~+5W positive power tolerance
Improved low light irradiance performance and low degradation



Stable mechanical performance

Passed rigorous hail test
Withstands 5400Pa snow and 2400Pa wind loads



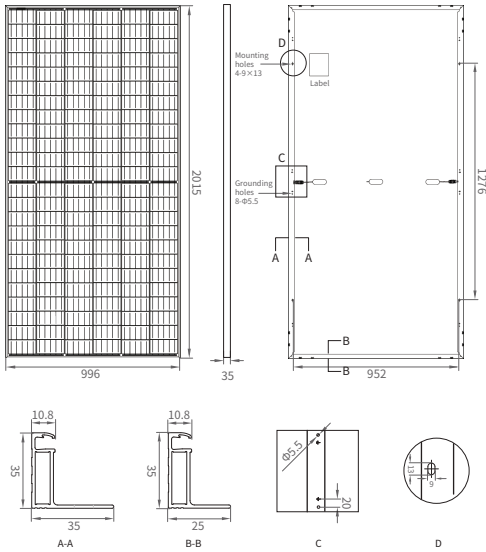
Long weather resistance

Excellent anti-PID performance
Certified in fireproofing for safety



JINNENG CLEAN ENERGY TECHNOLOGY LTD JINNENG PHOTOVOLTAIC TECHNOLOGY LTD

No.1 Wenshui Economic Development Zone, Lvliang, Shanxi 032100, China
No. 533, East Guang'an Street, Yuci District, Jinzhong, Shanxi 030600, China
Tel: +86(354)2037999 E-mail: sales@jinery.com



MECHANICAL PARAMETERS

Cell (mm)	158.75*79.375 Poly
Dimensions (L*W*H) (mm)	2015*996*35
Weight (kg)	22.1
Cable Cross Section Size (mm ²)	4
No. of Cells & Connections	144(6*24)
No. of Diodes	3

QUALIFICATION

Temperature Cycling Range (°C)	-40~+85
Max. Series Fuse Rating (A)	20
Max. Wind Load / Max. Snow Load (Pa)	2400 / 5400
Hot Spot Rate	100% Free
Fire Rating	Class C
Junction Box & Connector Protection Grade	IP68

ELECTRICAL PARAMETERS

Module Type	(1000V DC)	JNMP144-335L	JNMP144-340L	JNMP144-345L	JNMP144-350L	JNMP144-355L
	(1500V DC)	JNMP144-335	JNMP144-340	JNMP144-345	JNMP144-350	JNMP144-355
STC AM1.5 1000W/m ² Cell Temperature 25°C	Max. Power at STC (Pmpp/W)	335	340	345	350	355
	Output Tolerance (W)	0-+5	0-+5	0-+5	0-+5	0-+5
	Max. Power Voltage (Vmp/V)	37.56	37.74	37.92	38.10	38.28
	Max. Power Current (Imp/A)	8.92	9.01	9.10	9.19	9.28
	Open Circuit Voltage (Voc/V)	46.17	46.37	46.57	46.77	46.97
	Short Circuit Current (Isc/A)	9.45	9.55	9.65	9.75	9.85
Module Efficiency (%)	16.7	16.9	17.2	17.4	17.7	
NMOT AM1.5 800W/m ² Ambient Temperature 20°C Wind Speed 1m/s	Max. Power at NMOT (Pmpp/W)	251.7	255.5	259.2	263.0	266.7
	Max. Power Voltage (Vmp/V)	35.27	35.44	35.61	35.77	35.93
	Max. Power Current (Imp/A)	7.14	7.21	7.28	7.35	7.42
	Open Circuit Voltage (Voc/V)	43.44	43.63	43.82	44.01	44.19
	Short Circuit Current (Isc/A)	7.62	7.70	7.78	7.86	7.94

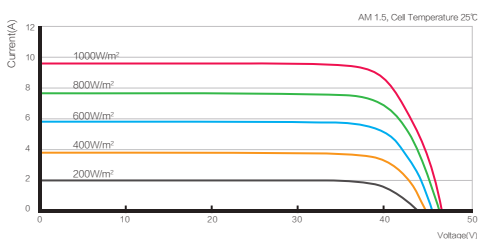
PACKING CONFIGURATION

Pieces Per Pallet	31
Pallets Per Stack	2
Extra Pieces Per Stack	4
Pieces Per Container	726

TEMPERATURE COEFFICIENTS

Nominal Module Operating Temperature (NMOT)	44±2°C
Temperature Coefficient Voltage (Voc)	-0.31 %/°C
Temperature Coefficient Current (Isc)	0.05 %/°C
Temperature Coefficient Power (Pm)	-0.38 %/°C

I-V CURVE(345W)



Optional

Connector Type	<input type="checkbox"/> MC4 Compatible	<input type="checkbox"/> MC4
Cable Length	<input type="checkbox"/> 295mm / 145mm	<input type="checkbox"/> Customized
Frame Color	<input type="checkbox"/> Silver	<input type="checkbox"/> Black
Max. System Voltage	<input type="checkbox"/> 1000V	<input type="checkbox"/> 1500V

Notes:

CAUTION: The electrical parameters in this product datasheet do not refer to only one module, nor are they promised in the contract. Read safety and installation instructions before using the product. The contents of this specification are for reference only and are subject to change without notice. Jinery reserves the right of final interpretation.
 © 2020(1) JINNENG CLEAN ENERGY TECHNOLOGY LTD. ALL RIGHTS RESERVED.